

ZKZP...H100 Blind End

Overview:

APPLICATION

Closing cable runs. Improving overall aesthetic appearance of cable runs.

Material

Hot-dip galv. steel to PN-EN ISO 1461:2011 (HDG)

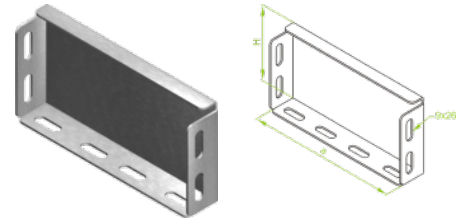
Available to order:

E- stainless steel (SS)

L- powder coating in a full range of colours (PC)

For the installation use 8 sets of Screw SGF M6×12

Full range angle adjustment!



Versions:

Sheet thickness: **1,5 mm**

Symbol	Width a [mm]	Catalogue number	Quantity in box	Height H [mm]	Weight 1 pc.
ZKZP100H100	95	314210	50	95	0,17
ZKZP200H100	195	314220	50	95	0,32
ZKZP300H100	295	314230	20	95	0,45
ZKZP400H100	395	314240	20	95	0,55
ZKZP500H100	495	314250	10	95	0,72
ZKZP600H100	595	314260	10	95	0,85