

## KRPBP...H50 Vertical Elbow - Right

### Overview:

**Application**

Transition of tray cable run in the horizontal plane to the vertical plane.

**Material**

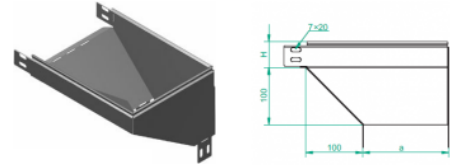
Steel, strip-galv. acc. to the Sendzimir method to PN-EN 10346:2011 (SG)

**Available to order:**

F- steel, hot-dip galv. to PN-EN ISO 1461:2011 (HDG)

E- stainless steel (SS)

L- powder coating in a full range of colours (PC)



**For installation use Screw Sets SGK M6×12 or SG M6×12.**

**Quick and convenient installation by the use of dismantled parts**

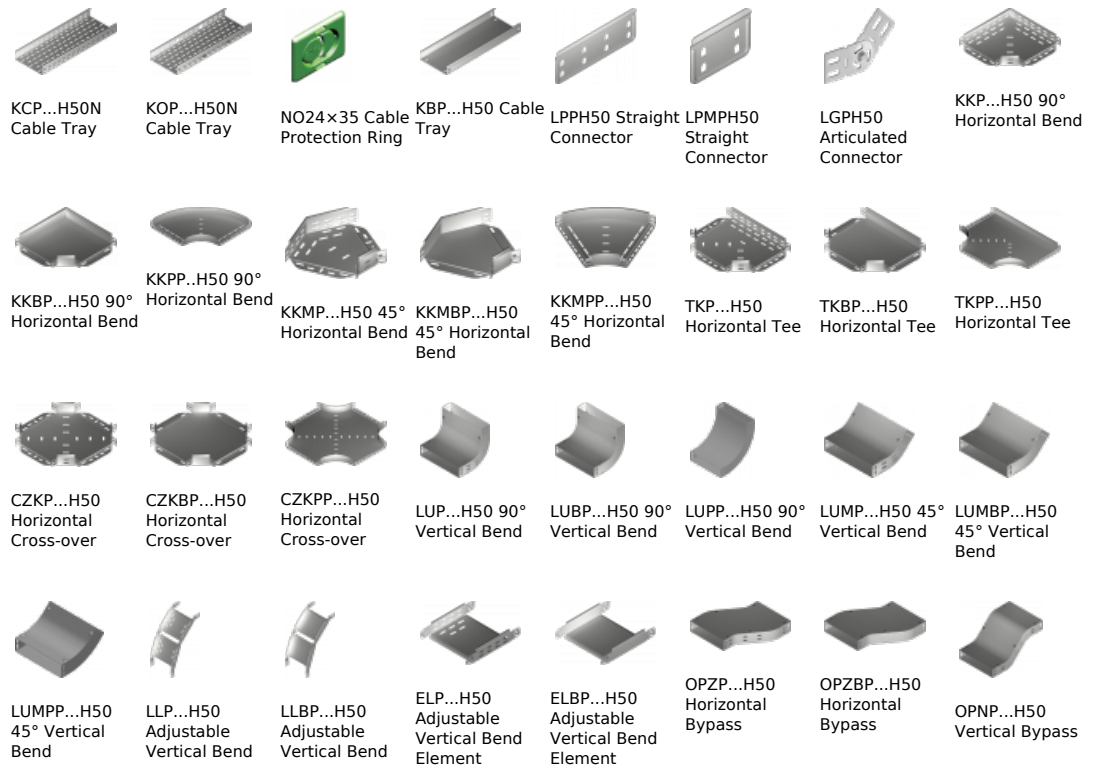
**This innovative solution allows for fast and safe cable laying without the need of pulling**

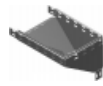
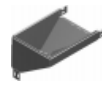
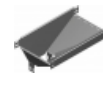
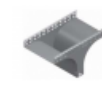
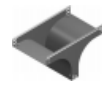
### Versions:

Sheet thickness: **1,5 mm**

Symbol	Width a [mm]	Catalogue number	Quantity in box	Weight 1 pc.
KRPBP50H50	50	154604	10	0,69
KRPBP100H50	100	154704	10	1,05
KRPBP150H50	150	154804	6	1,59
KRPBP200H50	200	154904	6	2,11
KRPBP300H50	300	155104	4	3,16
KRPBP400H50	400	155204	4	4,22
KRPBP500H50	500	155304	2	5,27
KRPBP600H50	600	155404	2	6,33

### Connected products:



OPNBP...H50  
Vertical BypassKRPP...H50  
Vertical Elbow -  
RightKRLP...H50  
Vertical Elbow -  
LeftKRLBP...H50  
Vertical Elbow -  
LeftTRP...H50  
Vertical Tee  
-LengthwiseTRBP...H50  
Vertical Tee  
-LengthwiseTRSP...H50  
Vertical Tee -  
CrosswiseTRSBP...H50  
Vertical Tee -  
CrosswiseRKLP...H50 Left  
ReducerRKLBP...H50 Left  
ReducerRKPP...H50  
Right ReducerRKPBP...H50  
Right ReducerRKSP...H50  
Straight  
ReducerRKSBP...H50  
Straight  
ReducerTKDP...H50  
Add-on TeeLRPPH50 Corner  
Connector