

TRJ...H50 Vertical Tee -Lengthwise

Overview:

Application

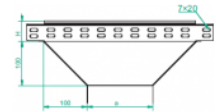
Branching out cable routes. Transition of tray cable run from the horizontal to the vertical plane.

Material

Steel, strip-galv. acc. to the Sendzimir method to PN-EN 10346:2011 (SG)

Available to order:

- F-** steel, hot-dip galv. to PN-EN ISO 1461:2011 (HDG)
- E-** stainless steel (SS)
- L-** powder coating in a full range of colours (PC)



For installation use Screw Sets SGK M6×12 or SG M6×12.
Quick and convenient installation by the use of dismantled parts
This innovative solution allows for fast and safe cable laying without the need of pulling

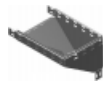
Versions:

Sheet thickness: **1,0 mm**

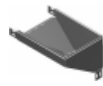
Symbol	Width a [mm]	Catalogue number	Quantity in box	Weight 1 pc.
TRJ50H50	50	158605	10	0,61
TRJ100H50	100	158610	10	0,87
TRJ150H50	150	158615	6	1,26
TRJ200H50	200	158620	6	1,66
TRJ300H50	300	158630	4	2,52
TRJ400H50	400	158640	4	1,66
TRJ500H50	500	158650	2	2,08
TRJ600H50	600	158660	2	2,52

Connected products:

KCJ...H50N Cable Tray	KOJ...H50N Cable Tray	NO24x35 Cable Protection Ring	KBJ...H50 Cable Tray	LGJH50 Articulated Connector	LKJH50 Angle Connector	KKJ...H50 90° Horizontal Bend	KKBJ...H50 90° Horizontal Bend
KKPJ...H50 90° Horizontal Bend	KKMJ...H50 45° Horizontal Bend	KKMBJ...H50 45° Horizontal Bend	KKMPJ...H50 45° Horizontal Bend	TKJ...H50 Horizontal Tee	TKBJ...H50 Horizontal Tee	TKPJ...H50 Horizontal Tee	CZKJ...H50 Horizontal Cross-over
CZKBJ...H50 Horizontal Cross-over	CZKPJ...H50 Horizontal Cross-over	LUJ...H50 90° Vertical Bend	LUBJ...H50 90° Vertical Bend	LUPJ...H50 90° Vertical Bend	LUMJ...H50 45° Vertical Bend	LUMBJ...H50 45° Vertical Bend	LUMPJ...H50 45° Vertical Bend
LLJ...H50 Adjustable Vertical Bend	LLBJ...H50 Adjustable Vertical Bend	ELJ...H50 Adjustable Vertical Bend Element	ELBJ...H50 Adjustable Vertical Bend Element	OPZJ...H50 Horizontal Bypass	OPZBJ...H50 Horizontal Bypass	OPNJ...H50 Vertical Bypass	OPNBJ...H50 Vertical Bypass



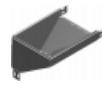
KRPJ...H50
Vertical Elbow -
Right



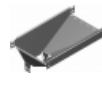
KRPBJ...H50
Vertical Elbow -
Right



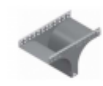
KRLJ...H50
Vertical Elbow -
Left



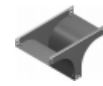
KRLBJ...H50
Vertical Elbow -
Left



TRBJ...H50
Vertical Tee
-Lengthwise



TRSJ...H50
Vertical Tee -
Crosswise



TRSBJ...H50
Vertical Tee -
Crosswise



RKLJ...H50 Left
Reducer



RKLBJ...H50 Left
Reducer



RKPJ...H50 Right
Reducer



RKPBJ...H50
Right Reducer



RKSJ...H50
Straight
Reducer



RKSBJ...H50
Straight
Reducer



LRJH50 Corner
Connector



LRBJH50 Corner
Connector



TKDJ...H50
Add-on Tee



LRPJH50 Corner
Connector