

KRLZC...H200 Vertical Elbow - Left

Overview:

APPLICATION

Transition from cable run in the horizontal plane to the vertical plane.

Material

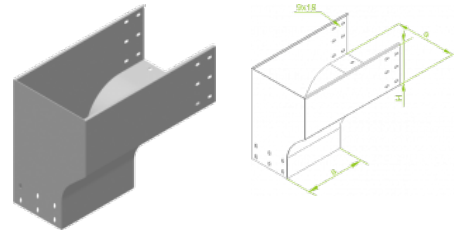
Hot-dip galv. steel to PN-EN ISO 1461:2011 (HDG)

Available to order:

E- stainless steel (SS)

L- powder coating in a full range of colours (PC)

For joining fittings to cable tray lengths use Straight Connectors LZC...



Versions:

Sheet thickness: **2,0 mm**

Symbol	Width a [mm]	Catalogue number	Quantity in box	Weight 1 pc.
KRLZC200H200	200	374320	10	8,41
KRLZC300H200	300	374330	4	9,19
KRLZC400H200	400	374340	4	10,36
KRLZC500H200	500	374350	4	11,62
KRLZC600H200	600	374360	4	12,96