

KRPZC...H200 Vertical Elbow - Right

Overview:

APPLICATION

Transition from cable run in the horizontal plane to the vertical plane.

Material

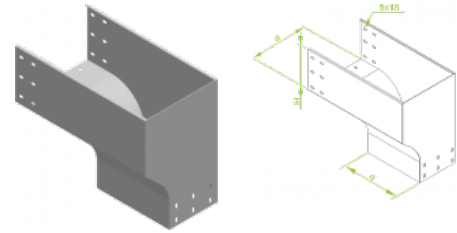
Hot-dip galv. steel to PN-EN ISO 1461:2011 (HDG)

Available to order:

E- stainless steel (SS)

L- powder coating in a full range of colours (PC)

For joining fittings to cable tray lengths use Straight Connectors LZC...



Versions:

Sheet thickness: **2,0 mm**

Symbol	Width a [mm]	Catalogue number	Quantity in box	Weight 1 pc.
KRPZC200H200	200	374520	10	8,41
KRPZC300H200	300	374530	4	9,19
KRPZC400H200	400	374540	4	10,36
KRPZC500H200	500	374550	4	11,62
KRPZC600H200	600	374560	4	12,96