

KRPZP...H200 Vertical Elbow - Right

Overview:

APPLICATION

Transition from cable run in the horizontal plane to the vertical plane.

Material

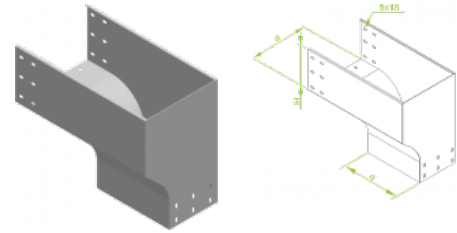
Hot-dip galv. steel to PN-EN ISO 1461:2011 (HDG)

Available to order:

E- stainless steel (SS)

L- powder coating in a full range of colours (PC)

For joining fittings to cable tray lengths use Straight Connectors LZC...



Versions:

Sheet thickness: **1,5 mm**

Symbol	Width a [mm]	Catalogue number	Quantity in box	Weight 1 pc.
KRPZP200H200	200	374420	10	6,10
KRPZP300H200	300	374430	4	6,92
KRPZP400H200	400	374440	4	7,80
KRPZP500H200	500	374450	4	8,74
KRPZP600H200	600	374460	4	9,75