

KRPP...H50 Vertical Elbow - Right

Overview:

Application

Transition of tray cable run in the horizontal plane to the vertical plane.

Material

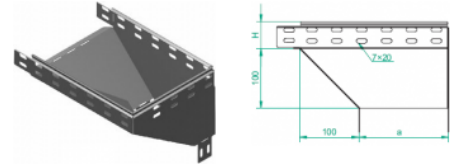
Steel, strip-galv. acc. to the Sendzimir method to PN-EN 10346:2011 (SG)

Available to order:

F- steel, hot-dip galv. to PN-EN ISO 1461:2011 (HDG)

E- stainless steel (SS)

L- powder coating in a full range of colours (PC)



For installation use Screw Sets SGK M6×12 or SG M6×12.

Quick and convenient installation by the use of dismantled parts

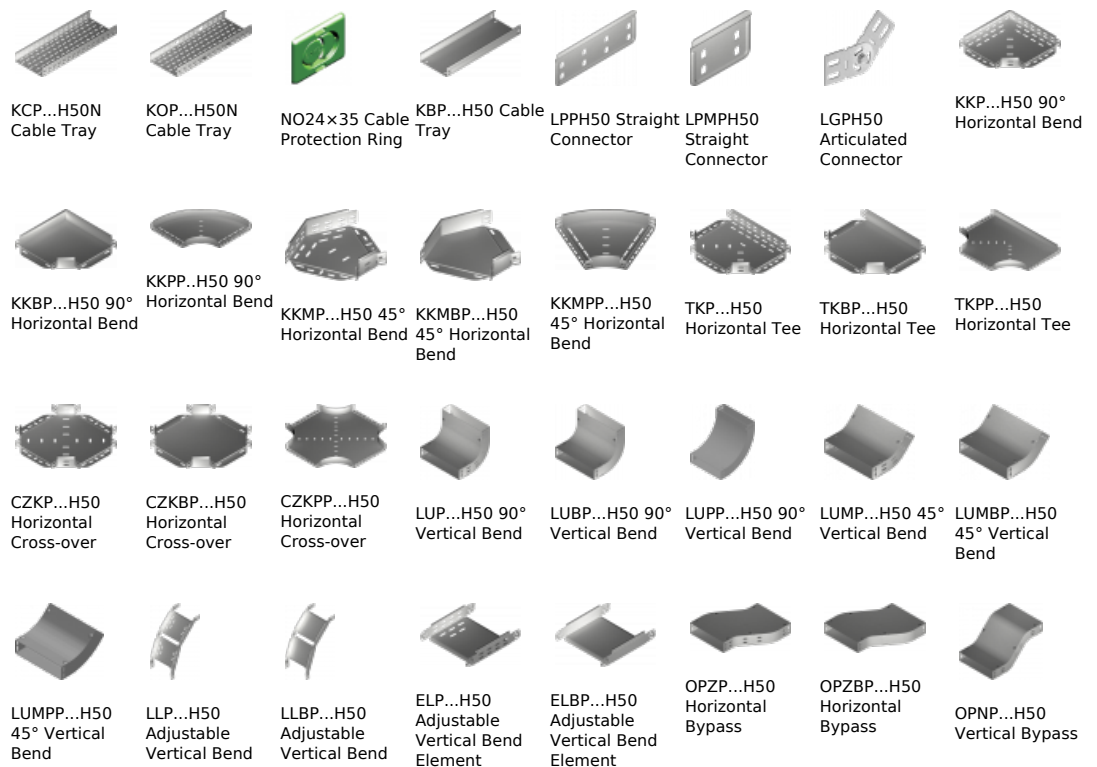
This innovative solution allows for fast and safe cable laying without the need of pulling

Versions:

Sheet thickness: **1,5 mm**

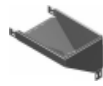
Symbol	Width a [mm]	Catalogue number	Quantity in box	Weight 1 pc.
KRPP50H50	50	155005	10	0,69
KRPP100H50	100	155010	10	1,05
KRPP150H50	150	155015	6	1,59
KRPP200H50	200	155020	6	2,11
KRPP300H50	300	155030	4	3,16
KRPP400H50	400	155040	4	4,22
KRPP500H50	500	155050	2	5,27
KRPP600H50	600	155060	2	6,33

Connected products:





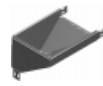
OPNBP...H50
Vertical Bypass



KRPBP...H50
Vertical Elbow -
Right



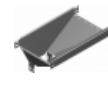
KRLP...H50
Vertical Elbow -
Left



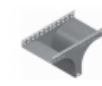
KRLBP...H50
Vertical Elbow -
Left



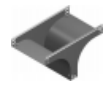
TRP...H50
Vertical Tee
-Lengthwise



TRBP...H50
Vertical Tee
-Lengthwise



TRSP...H50
Vertical Tee -
Crosswise



TRSBP...H50
Vertical Tee -
Crosswise



RKLP...H50 Left
Reducer



RKLBP...H50 Left
Reducer



RKPP...H50 Right
Reducer



RKPBP...H50 Right
Reducer



RKSP...H50 Straight
Reducer



RKSBP...H50 Straight
Reducer



TKDP...H50
Add-on Tee



LRPPH50 Corner
Connector