

## TRSP...H50 Vertical Tee - Crosswise

### Overview:

**Application**

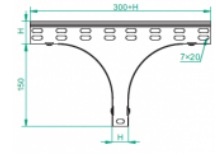
Branching out cable routes. Transition of tray cable run from the horizontal to the vertical plane.

**Material**

Steel, strip-galv. acc. to the Sendzimir method to PN-EN 10346:2011 (SG)

**Available to order:**

- F-** steel, hot-dip galv. to PN-EN ISO 1461:2011 (HDG)
- E-** stainless steel (SS)
- L-** powder coating in a full range of colours (PC)



**For installation use Screw Sets SGK M6×12 or SG M6×12 and Straight Connectors LPL or LPP.**  
**Quick and convenient installation by the use of dismantled parts**  
**This innovative solution allows for fast and safe cable laying without the need of pulling**

### Versions:

Sheet thickness: **1,5 mm**

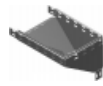
Symbol	Width a [mm]	Catalogue number	Quantity in box	Weight 1 pc.
TRSP50H50	50	155405	10	1,04
TRSP100H50	100	155410	6	1,32
TRSP150H50	150	155415	6	1,59
TRSP200H50	200	155420	4	1,87
TRSP300H50	300	155430	4	2,42
TRSP400H50	400	155440	1	2,97
TRSP500H50	500	155450	1	3,53
TRSP600H50	600	155460	1	4,08

### Connected products:

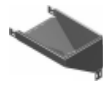
KCP...H50N Cable Tray	KOP...H50N Cable Tray	NO24×35 Cable Protection Ring	KBP...H50 Cable Tray	LPPH50 Straight Connector	LPMH50 Straight Connector	LGPH50 Articulated Connector	KKP...H50 90° Horizontal Bend
KKBP...H50 90° Horizontal Bend	KKPP...H50 90° Horizontal Bend	KKMP...H50 45° Horizontal Bend	KKMBP...H50 45° Horizontal Bend	KKMPP...H50 45° Horizontal Bend	TKP...H50 Horizontal Tee	TKBP...H50 Horizontal Tee	TKPP...H50 Horizontal Tee
CZKP...H50 Horizontal Cross-over	CZKBP...H50 Horizontal Cross-over	CZKPP...H50 Horizontal Cross-over	LUP...H50 90° Vertical Bend	LUBP...H50 90° Vertical Bend	LUPP...H50 90° Vertical Bend	LUMP...H50 45° Vertical Bend	LUMB...H50 45° Vertical Bend
LUMPP...H50 45° Vertical Bend	LLP...H50 Adjustable Vertical Bend	LLBP...H50 Adjustable Vertical Bend	ELP...H50 Adjustable Vertical Bend Element	ELBP...H50 Adjustable Vertical Bend Element	OPZP...H50 Horizontal Bypass	OPZBP...H50 Horizontal Bypass	OPNP...H50 Vertical Bypass



OPNBP...H50  
Vertical Bypass



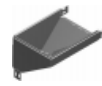
KRPP...H50  
Vertical Elbow -  
Right



KRPBP...H50  
Vertical Elbow -  
Right



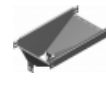
KRLP...H50  
Vertical Elbow -  
Left



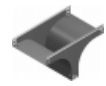
KRLBP...H50  
Vertical Elbow -  
Left



TRP...H50  
Vertical Tee  
-Lengthwise



TRBP...H50  
Vertical Tee  
-Lengthwise



TRSBP...H50  
Vertical Tee -  
Crosswise



RKLP...H50 Left  
Reducer



RKLBP...H50 Left  
Reducer



RKPP...H50  
Right Reducer



RKPBP...H50  
Right Reducer



RKSP...H50  
Straight  
Reducer



RKSBP...H50  
Straight  
Reducer



TKDP...H50  
Add-on Tee



LRPPH50 Corner  
Connector