

## LUPP...H50 90° Vertical Bend

### Overview:

**Application**

Diversions in cable routing.

**Material**

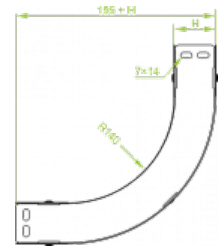
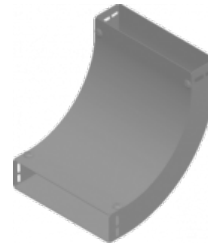
Steel, strip-galv. acc. to the Sendzimir method to PN-EN 10346:2011 (SG)

**Available to order:**

F- steel, hot-dip galv. to PN-EN ISO 1461:2011 (HDG)

E- stainless steel (SS)

L- powder coating in a full range of colours (PC)



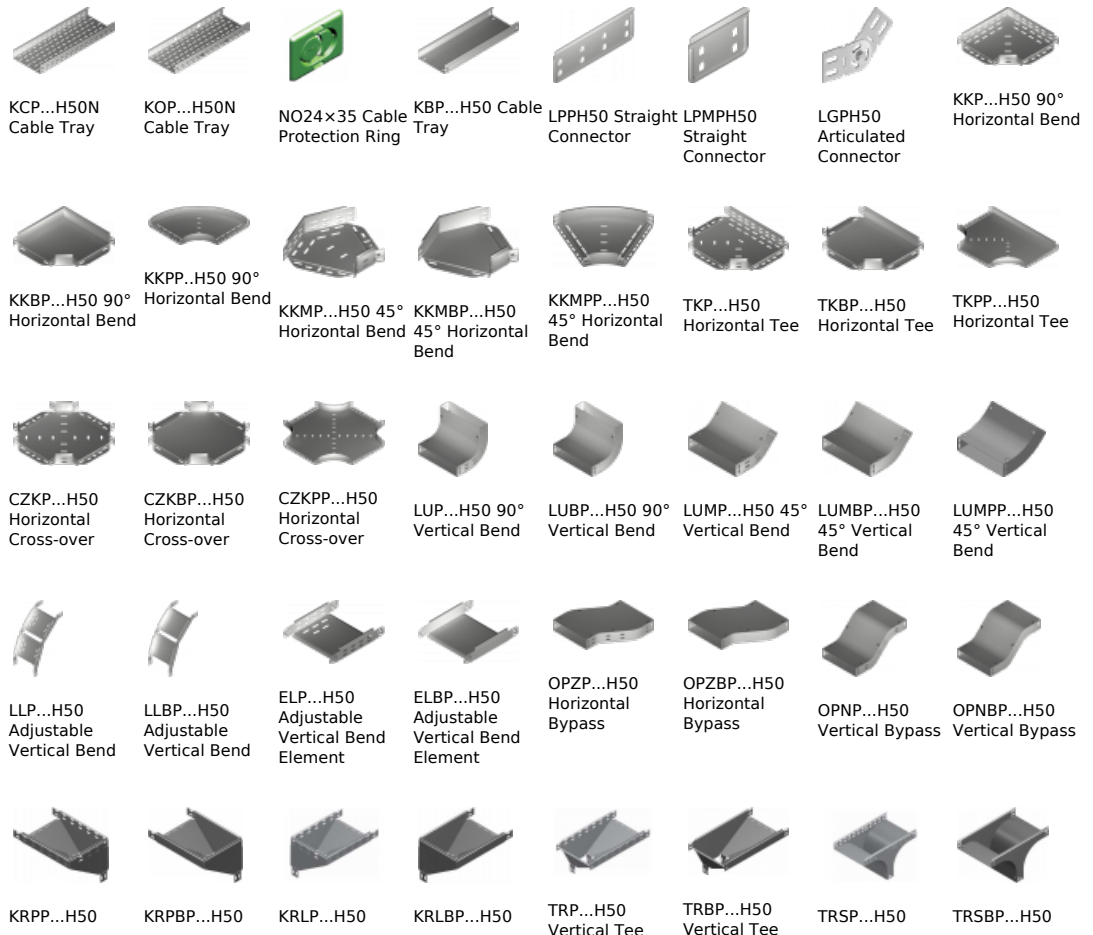
**For installation use Screw Sets SGK M6×12 or SG M6×12 and Straight Connectors LPL or LPP. Quick and convenient installation by the use of dismantled parts. This innovative solution allows for fast and safe cable laying without the need of pulling**

### Versions:

Sheet thickness: 1,5 mm

Symbol	Width a [mm]	Catalogue number	Quantity in box	Weight 1 pc.
LUPP50H50	50	157514	10	0,95
LUPP100H50	100	157614	10	1,35
LUPP150H50	150	157714	10	1,82
LUPP200H50	200	157814	10	2,36
LUPP300H50	300	157914	4	3,43
LUPP400H50	400	158014	4	4,51
LUPP500H50	500	158114	4	5,58
LUPP600H50	600	158214	4	6,65

### Connected products:



Vertical Elbow - Right	Vertical Elbow - Right	Vertical Elbow - Left	Vertical Elbow - Left	-Lengthwise	-Lengthwise	Vertical Tee - Crosswise	Vertical Tee - Crosswise
							
RKLP...H50 Left Reducer	RKLB...H50 Left Reducer	RKPP...H50 Right Reducer	RKPBP...H50 Right Reducer	RKSP...H50 Straight Reducer	RKSBP...H50 Straight Reducer	TKDP...H50 Add-on Tee	LRPPH50 Corner Connector