

## OPNJ...H60 Vertical Bypass

### Overview:

**Application**

Diversions in cable routing.

**Material**

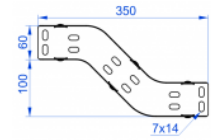
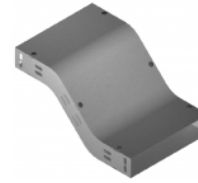
Steel, strip-galv. acc. to the Sendzimir method to PN-EN 10346:2011 (SG)

**Available to order:**

**F-** steel, hot-dip galv. to PN-EN ISO 1461:2011 (HDG)

**E-** stainless steel (SS)

**L-** powder coating in a full range of colours (PC)



**For installation use Screw Sets SGK M6x12 or SG M6x12 and Straight Connectors LPL or LPP. Quick and convenient installation by the use of dismantled parts. This innovative solution allows for fast and safe cable laying without the need of pulling**

### Versions:

Sheet thickness: **1,0 mm**

Symbol	Width a [mm]	Catalogue number	Quantity in box	Weight 1 pc.
OPNJ50H60	50	166724	2	0,62
OPNJ100H60	100	168010	2	0,86
OPNJ150H60	150	168015	2	1,12
OPNJ200H60	200	168020	2	1,38
OPNJ300H60	300	168030	2	1,92
OPNJ400H60	400	168040	2	2,44
OPNJ500H60	500	168050	2	3,18
OPNJ600H60	600	168060	2	3,52

### Connected products:

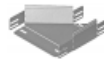
KGJ/KGOJ...H60 Cable Tray	KPJ Cable Tray	KCJ/KCOJ...H60 Cable Tray	KOJ...H60N Cable Tray	NO24x35 Cable Protection Ring	KBJ...H60 Cable Tray	KKJ...H60 90° Horizontal Bend	KKBJ...H60 90° Horizontal Bend
KKPJ...H60 90° Horizontal Bend	KKMJ...H60 45° Horizontal Bend	KKMBJ...H60 45° Horizontal Bend	KKMPJ...H60 45° Horizontal Bend	TKJ...H60 Horizontal Tee	TKBJ...H60 Horizontal Tee	TKPJ...H60 Horizontal Tee	CZKJ...H60 Horizontal Cross-over
CZKBJ...H60 Horizontal Cross-over	CZKPJ...H60 Horizontal Cross-over	LUJ...H60 90° Vertical Bend	LUBJ...H60 90° Vertical Bend	LUPJ...H60 90° Vertical Bend	LUMJ...H60 45° Vertical Bend	LUMBj...H60 45° Vertical Bend	LUMPJ...H60 45° Vertical Bend
LLJ...H60 Adjustable Vertical Bend	LLBJ...H60 Adjustable Vertical Bend	ELJ...H60 Adjustable Vertical Bend Element	ELBJ...H60 Adjustable Vertical Bend Element	OPZJ...H60 Horizontal Bypass	OPZBJ...H60 Horizontal Bypass	OPNBj...H60 Vertical Bypass	KRPJ...H60 Vertical Elbow - Right
KRPBJ...H60 Vertical Elbow - Right	KRLJ...H60 Vertical Elbow - Left	KRLBJ...H60 Vertical Elbow - Left	TRJ...H60 Vertical Tee - Lengthwise	TRBJ...H60 Vertical Tee - Lengthwise	TRSJ...H60 Vertical Crosswise Tee	TRSBj...H60 Vertical Tee - Crosswise	RKLJ...H60 Left Reducer



RKLBJ...H60 Left Reducer



RKPJ...H60 Right Reducer



RKPBJ...H60 Right Reducer



RKSJ...H60 Straight Reducer



RKSBJ...H60 Straight Reducer



LRJH60 Corner Connector



LRBH60 Corner Connector



TKDJ...H60 Add-on Tee



LRPJH60 Corner Connector