

KRPJ...H60 Vertical Elbow - Right

Overview:

Application

Transition of tray cable run in the horizontal plane to the vertical plane.

Material

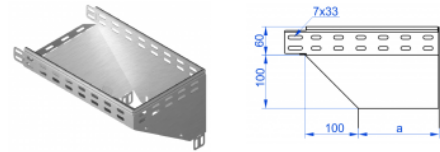
Steel, strip-galv. acc. to the Sendzimir method to PN-EN 10346:2011 (SG)

Available to order:

F- steel, hot-dip galv. to PN-EN ISO 1461:2011 (HDG)

E- stainless steel (SS)

L- powder coating in a full range of colours (PC)



For installation use Screw Sets SGK M6×12 or SG M6×12.

Quick and convenient installation by the use of dismantled parts

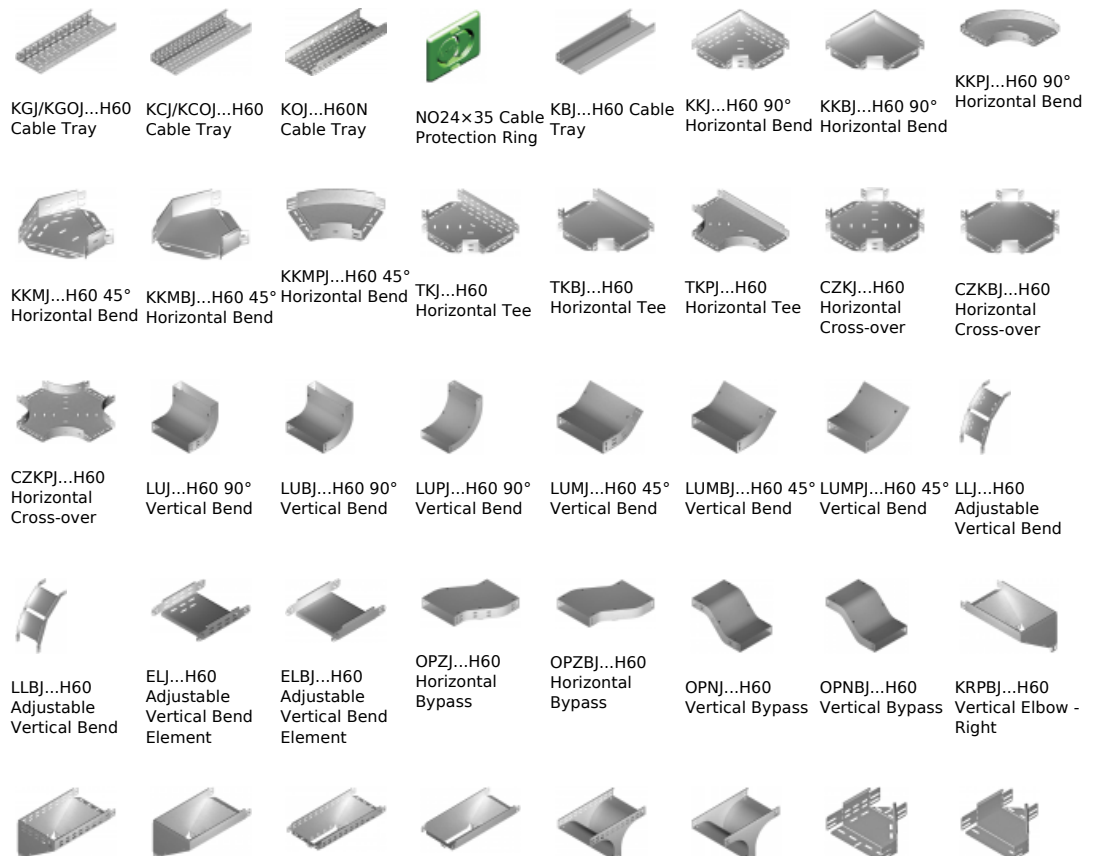
This innovative solution allows for fast and safe cable laying without the need of pulling

Versions:

Sheet thickness: **1,0 mm**

Symbol	Width a [mm]	Catalogue number	Quantity in box	Weight 1 pc.
KRPJ50H60	50	169124	1	0,48
KRPJ100H60	100	168410	1	0,77
KRPJ150H60	150	168415	1	1,16
KRPJ200H60	200	168420	1	1,54
KRPJ300H60	300	168430	1	2,32
KRPJ400H60	400	168440	1	3,08
KRPJ500H60	500	168450	1	3,85
KRPJ600H60	600	168460	1	4,60

Connected products:



KRLJ...H60 Vertical Elbow - Left	KRLBJ...H60 Vertical Elbow - Left	TRJ...H60 Vertical Tee -Lengthwise	TRBJ...H60 Vertical Tee -Lengthwise	TRSJ...H60 Vertical Crosswise Tee	TRSBJ...H60 Vertical Tee - Crosswise	RKLJ...H60 Left Reducer	RKLBJ...H60 Left Reducer
							
RKPJ...H60 Right Reducer	RKPBJ...H60 Right Reducer	RKSJ...H60 Straight Reducer	RKSBJ...H60 Straight Reducer	LRJH60 Corner Connector	LRBJH60 Corner Connector	TKDJ...H60 Add-on Tee	LRPJH60 Corner Connector