

## KKPP/KKPOP...H60 90° Horizontal Bend

### Overview:

**Application**

Diversions in cable routing.

**Material**

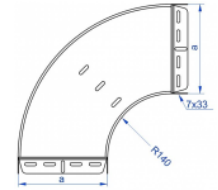
Steel, strip-galv. acc. to the Sendzimir method to PN-EN 10346:2011 (SG)

**Available to order:**

F- steel, hot-dip galv. to PN-EN ISO 1461:2011 (HDG)

E- stainless steel (SS)

L- powder coating in a full range of colours (PC)



**For installation use Screw Sets SGK M6×12 or SG M6×12.  
In case of special orders please specify dimensions a and b.**

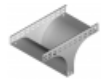
### Versions:

Sheet thickness: 1,5 mm

Symbol	Width a [mm]	Catalogue number	Quantity in box	Weight 1 pc.
KKPP/KKPOP50H60	50	163224	20	0,62
KKPP/KKPOP100H60	100	160814	10	0,90
KKPP/KKPOP150H60	150	160914	10	1,23
KKPP/KKPOP200H60	200	161014	10	1,60
KKPP/KKPOP300H60	300	161114	10	2,48
KKPP/KKPOP400H60	400	161214	10	3,44
KKPP/KKPOP500H60	500	161314	10	4,81
KKPP/KKPOP600H60	600	161414	10	6,24

### Connected products:

KCP/KCOP...H60 Cable Tray	KOP...H60N Cable Tray	NO24×35 Cable Protection Ring	KBP...H60 Cable Tray	LPP/LPOPH60 Straight Connector	LPMH60 Straight Connector	LGJH60 Articulated Connector	LGP/LGOPH60 Articulated Connector
LKJ/LKOJH60 Angle Connector	KKP...H60 90° Horizontal Bend	KKBP...H60 90° Horizontal Bend	KKMP...H60 45° Horizontal Bend	KKMBP...H60 45° Horizontal Bend	KKMPP/KKMPOP...H60 45° Horizontal Bend	TKP...H60 Horizontal Tee	TKBP...H60 Horizontal Tee
TKPP/TKPOP...H60 Horizontal Tee	CZKP...H60 Horizontal Cross-over	CZKBP...H60 Horizontal Cross-over	CZKPP/CZKPOP...H60 Horizontal Cross-over	LUP...H60 90° Vertical Bend	LUBP...H60 90° Vertical Bend	LUPP...H60 90° Vertical Bend	LUMP...H60 45° Vertical Bend
LUMBP...H60 45° Vertical Bend	LUMPP...H60 45° Vertical Bend	LLP/LLOP...H60 Adjustable Vertical Bend	LLBP...H60 Adjustable Vertical Bend	ELP...H60 Adjustable Vertical Bend Element	ELBP...H60 Adjustable Vertical Bend Element	OPZP...H60 Horizontal Bypass	OPZBP...H60 Horizontal Bypass
OPNP...H60 Vertical Bypass	OPNBP...H60 Vertical Bypass	KRPP...H60 Vertical Elbow - Right	KRBP...H60 Vertical Elbow - Right	KRLP...H60 Vertical Elbow - Left	KRLBP...H60 Vertical Elbow - Left	TRP...H60 Vertical Tee - Lengthwise	TRBP...H60 Vertical Tee - Lengthwise



TRSP...H60  
Vertical Tee -  
Crosswise



TRSBP...H60  
Vertical Tee -  
Crosswise



RKL...H60 Left  
Reducer



RKLBP...H60 LeftRight  
Reducer



RKPP...H60



RKPBP...H60  
Right Reducer



RKSP...H60  
Straight  
Reducer



RKSBP...H60  
Straight  
Reducer



TKDP...H60  
Add-on Tee



LRPPH60 Corner  
Connector