

KKMBL...H30 45° Horizontal Bend

Overview:

Application

Diversions in cable routing.

Material

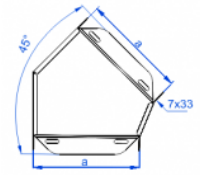
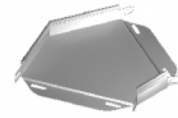
Steel, strip-galv. acc. to the Sendzimir method to PN-EN 10346:2011 (SG)

Available to order:

F- steel, hot-dip galv. to PN-EN ISO 1461:2011 (HDG)

E- stainless steel (SS)

L- powder coating in a full range of colours (PC)



For installation use Screw Sets SGK M6×10 or SG M6×10.

Versions:

Sheet thickness: **0,7 mm**

Symbol	Width a [mm]	Catalogue number	Quantity in box	Weight 1 pc.
KKMBL50H30	50	135205	20	0,05
KKMBL100H30	100	135210	20	0,11
KKMBL150H30	150	135215	10	0,17
KKMBL200H30	200	135220	10	0,23
KKMBL300H30	300	135230	10	0,48

Connected products:



KGJ...H30 Cable Tray



KGR...H30 Cable Tray



KGL...H30 Cable Tray



KBJ...H30 Cable Tray



KBR...H30 Cable Tray