

KKMBJ...H30 45° Horizontal Bend

Overview:

Application

Diversions in cable routing.

Material

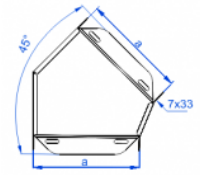
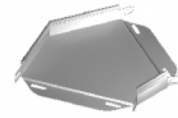
Steel, strip-galv. acc. to the Sendzimir method to PN-EN 10346:2011 (SG)

Available to order:

F- steel, hot-dip galv. to PN-EN ISO 1461:2011 (HDG)

E- stainless steel (SS)

L- powder coating in a full range of colours (PC)



For installation use Screw Sets SGK M6×10 or SG M6×10.

Versions:

Sheet thickness: **1,0 mm**

Symbol	Width a [mm]	Catalogue number	Quantity in box	Weight 1 pc.
KKMBJ50H30	50	135305	20	0,09
KKMBJ100H30	100	135310	20	0,16
KKMBJ150H30	150	135315	10	0,34
KKMBJ200H30	200	135320	10	0,39
KKMBJ300H30	300	135330	10	0,76

Connected products:



KGJ...H30 Cable Tray



KGR...H30 Cable Tray



KGL...H30 Cable Tray



KBJ...H30 Cable Tray



KBR...H30 Cable Tray