

KMP...H200 Cable Tray

Overview:

APPLICATIONS

Connecting cable routes.

MATERIAL

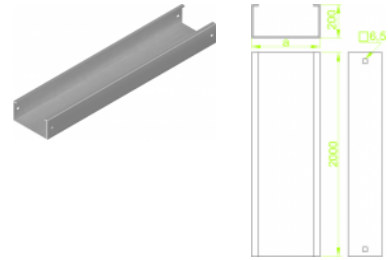
Steel, strip-galv. acc. to the Sendzimir method to PN-EN 10346:2011 (SG).

Available finishes:

F- steel, hot-dip galv. to

PN-EN ISO 1461:2011 (HDG)

E - stainless steel (SS), grade 1.4301 (AISI304)



Cable trays together with covers in a set

Sheet thickness: **1,5 mm**

Versions:

Symbol	Length L [m]	Width a [mm]	Catalogue number	Quantity in box	Weight [1m]
KMP200H200/2	2000	200	816720	2	7,66
KMP300H200/2	2000	300	816730	2	8,89
KMP400H200/2	2000	400	816740	2	10,13
KMP500H200/2	2000	500	816750	2	11,37
KMP600H200/2	2000	600	816760	2	12,60