

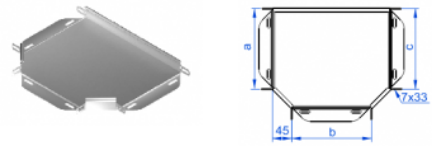
## TKBJ...H30 Horizontal Tee

### Overview:

**Application**  
Branching out cable routes.

**Material**  
Steel, strip-galv. acc. to the Sendzimir method to PN-EN 10346:2011 (SG)

**Available to order:**  
**F-** steel, hot-dip galv. to PN-EN ISO 1461:2011 (HDG)  
**E-** stainless steel (SS)  
**L-** powder coating in a full range of colours (PC)



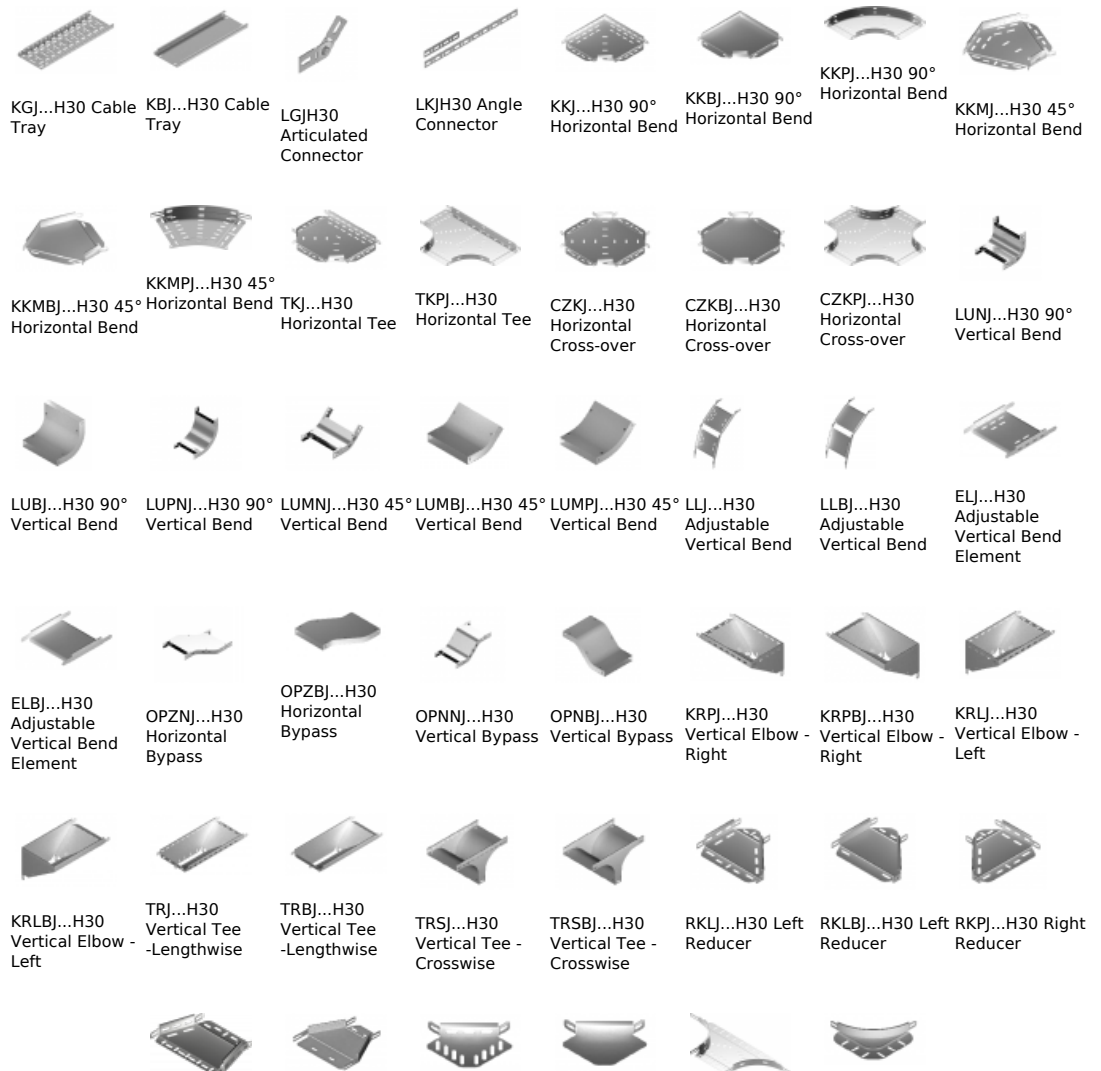
**For installation use Screw Sets SGK M6×10 or SG M6×10.**  
**In case of special orders please specify dimensions: a, b, etc.**

### Versions:

Sheet thickness: **1,0 mm**

Symbol	Width a [mm]	Catalogue number	Quantity in box	Weight 1 pc.
<b>TKBJ50H30</b>	<b>50</b>	<b>135505</b>	<b>20</b>	<b>0,17</b>
<b>TKBJ100H30</b>	<b>100</b>	<b>135510</b>	<b>20</b>	<b>0,25</b>
<b>TKBJ150H30</b>	<b>150</b>	<b>135515</b>	<b>10</b>	<b>0,42</b>
<b>TKBJ200H30</b>	<b>200</b>	<b>135520</b>	<b>10</b>	<b>0,61</b>
<b>TKBJ300H30</b>	<b>300</b>	<b>135530</b>	<b>10</b>	<b>1,18</b>

### Connected products:





RKSJ...H30  
Straight  
Reducer

RKSBJ...H30  
Straight  
Reducer

LRJH30 Corner  
Connector

LRBJH30 Corner  
Connector

TKDJ...H30  
Add-on Tee

LRPJH30 Corner  
Connector

RKPBJ...H30  
Right Reducer