

## KRLBJ...H80 Vertical Elbow - Left

### Overview:

**Application**

Transition of tray cable run in the horizontal plane to the vertical plane.

**Material**

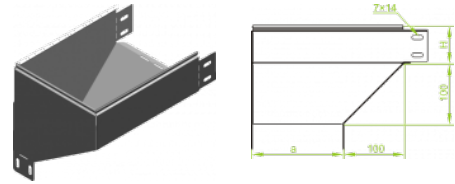
Steel, strip-galv. acc. to the Sendzimir method to PN-EN 10346:2011 (SG)

**Available to order:**

**F-** steel, hot-dip galv. to PN-EN ISO 1461:2011 (HDG)

**E-** stainless steel (SS)

**L-** powder coating in a full range of colours (PC)



**For installation use Screw Sets SGK M6x12 or SG M6x12.**

**Quick and convenient installation by the use of dismantled parts**

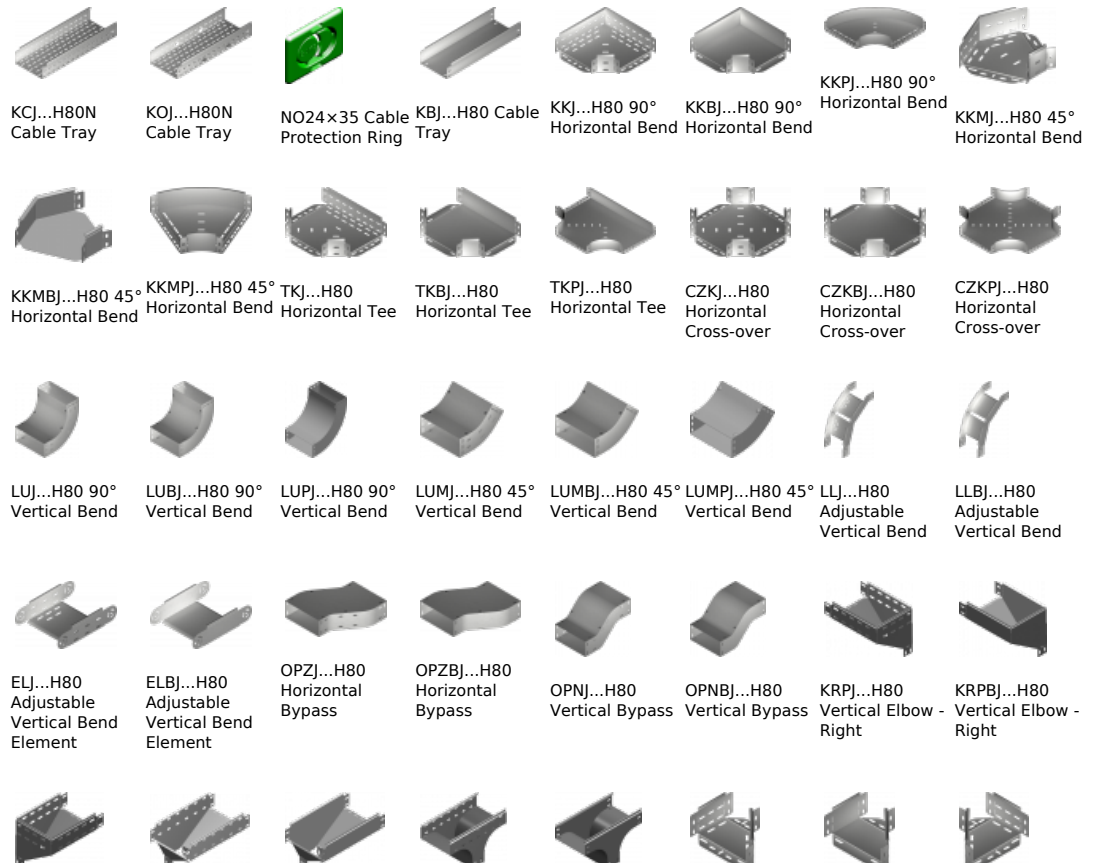
**This innovative solution allows for fast and safe cable laying without the need of pulling**








### Versions:

Sheet thickness: **1,0 mm**

Symbol	Width a [mm]	Catalogue number	Quantity in box	Weight 1 pc.
<b>KRLBJ100H80</b>	<b>100</b>	<b>188110</b>	<b>4</b>	<b>0,88</b>
<b>KRLBJ150H80</b>	<b>150</b>	<b>188115</b>	<b>4</b>	<b>1,34</b>
<b>KRLBJ200H80</b>	<b>200</b>	<b>188120</b>	<b>4</b>	<b>1,78</b>
<b>KRLBJ300H80</b>	<b>300</b>	<b>188130</b>	<b>2</b>	<b>2,78</b>
<b>KRLBJ400H80</b>	<b>400</b>	<b>188140</b>	<b>2</b>	<b>3,60</b>
<b>KRLBJ500H80</b>	<b>500</b>	<b>188150</b>	<b>2</b>	<b>4,60</b>
<b>KRLBJ600H80</b>	<b>600</b>	<b>188160</b>	<b>2</b>	<b>5,50</b>

### Connected products:



KRLJ...H80 Vertical Elbow - Left	TRJ...H80 Vertical Tee -Lengthwise	TRBJ...H80 Vertical Tee -Lengthwise	TRSJ...H80 Vertical Tee - Crosswise	TRSBJ...H80 Vertical Tee - Crosswise	RKLJ...H80 Left Reducer	RKLBJ...H80 Left Reducer	RKPJ...H80 Right Reducer
							
RKPBJ...H80 Right Reducer	RKSJ...H80 Straight Reducer	RKSBJ...H80 Straight Reducer	LRJH80 Corner Connector	LRBJH80 Corner Connector	TKDJ...H80 Add-on Tee	LRPJH80 Corner Connector	