

KRPBP...H80 Vertical Elbow - Right

Overview:

Application

Transition of tray cable run in the horizontal plane to the vertical plane.

Material

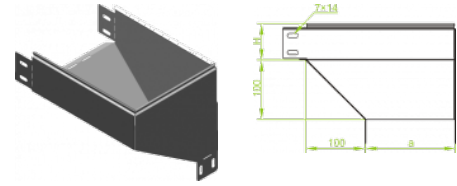
Steel, strip-galv. acc. to the Sendzimir method to PN-EN 10346:2011 (SG)

Available to order:

F- steel, hot-dip galv. to PN-EN ISO 1461:2011 (HDG)

E- stainless steel (SS)

L- powder coating in a full range of colours (PC)



For installation use Screw Sets SGK M6x12 or SG M6x12.

Quick and convenient installation by the use of dismantled parts

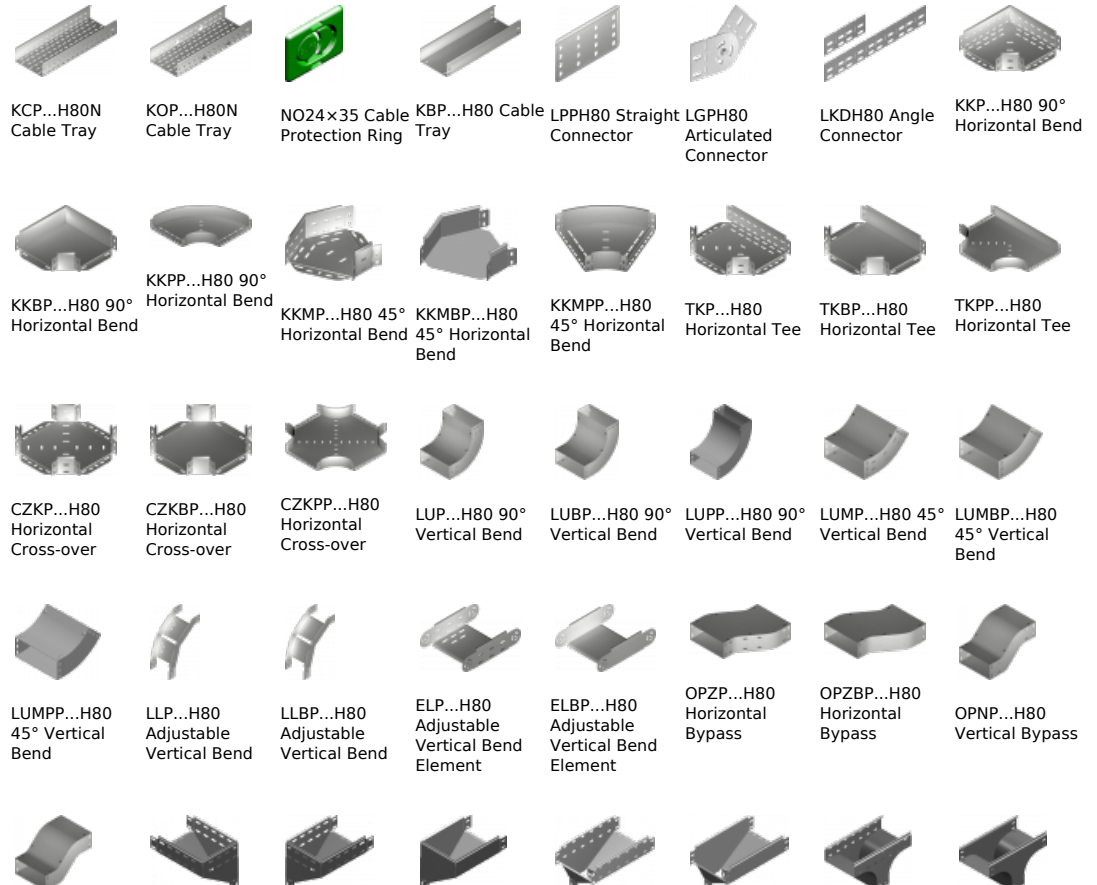
This innovative solution allows for fast and safe cable laying without the need of pulling

Versions:

Sheet thickness: **1,5 mm**

Symbol	Width a [mm]	Catalogue number	Quantity in box	Weight 1 pc.
KRPBP100H80	100	188410	4	1,33
KRPBP150H80	150	188415	4	1,81
KRPBP200H80	200	188420	4	2,65
KRPBP300H80	300	188430	2	4,00
KRPBP400H80	400	188440	2	5,30
KRPBP500H80	500	188450	2	6,60
KRPBP600H80	600	188460	2	7,90

Connected products:



OPNBP...H80 Vertical Bypass	KRPP...H80 Vertical Elbow - Right	KRLP...H80 Vertical Elbow - Left	KRLBP...H80 Vertical Elbow - Left	TRP...H80 Vertical Tee -Lengthwise	TRBP...H80 Vertical Tee -Lengthwise	TRSP...H80 Vertical Tee - Crosswise	TRSBP...H80 Vertical Tee - Crosswise
							
RKLP...H80 Left Reducer	RKLBP...H80 Left Reducer	RKPP...H80 Right Reducer	RKBPB...H80 Right Reducer	RKSP...H80 Straight Reducer	RKSBP...H80 Straight Reducer	TKDP...H80 Add-on Tee	LRPPH80 Corner Connector