

## TRBJ...H80 Vertical Tee -Lengthwise

### Overview:

**Application**

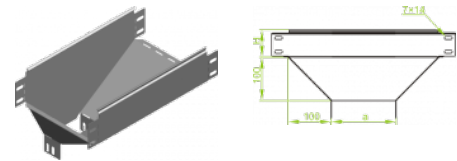
Branching out cable routes. Transition of tray cable run from the horizontal to the vertical plane.

**Material**

Steel, strip-galv. acc. to the Sendzimir method to PN-EN 10346:2011 (SG)

**Available to order:**

- F-** steel, hot-dip galv. to PN-EN ISO 1461:2011 (HDG)
- E-** stainless steel (SS)
- L-** powder coating in a full range of colours (PC)



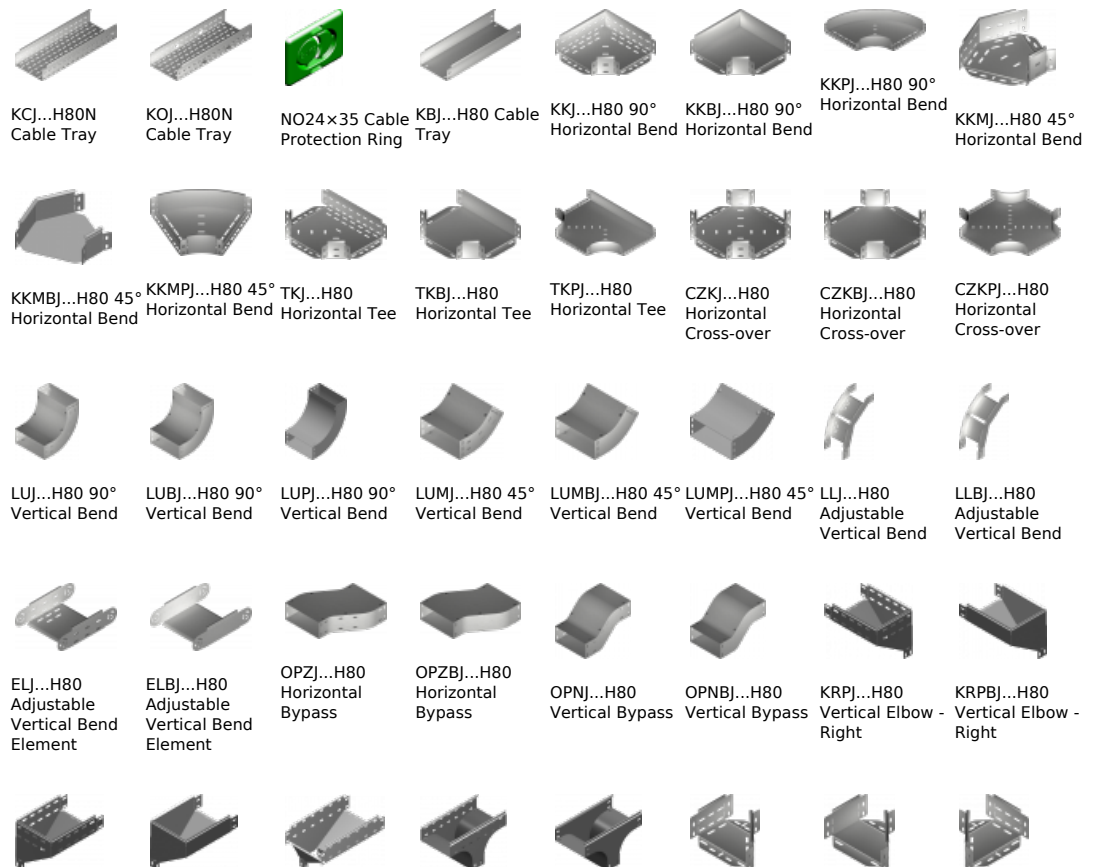
**For installation use Screw Sets SGK M6×12 or SG M6×12.**  
**Quick and convenient installation by the use of dismantled parts**  
**This innovative solution allows for fast and safe cable laying without the need of pulling**









### Versions:

Sheet thickness: **1,0 mm**

Symbol	Width a [mm]	Catalogue number	Quantity in box	Weight 1 pc.
<b>TRBJ100H80</b>	<b>100</b>	<b>188510</b>	<b>4</b>	<b>1,09</b>
<b>TRBJ150H80</b>	<b>150</b>	<b>188515</b>	<b>4</b>	<b>1,59</b>
<b>TRBJ200H80</b>	<b>200</b>	<b>188520</b>	<b>4</b>	<b>2,01</b>
<b>TRBJ300H80</b>	<b>300</b>	<b>188530</b>	<b>2</b>	<b>3,15</b>
<b>TRBJ400H80</b>	<b>400</b>	<b>188540</b>	<b>2</b>	<b>4,25</b>
<b>TRBJ500H80</b>	<b>500</b>	<b>188550</b>	<b>1</b>	<b>5,40</b>
<b>TRBJ600H80</b>	<b>600</b>	<b>188560</b>	<b>1</b>	<b>5,80</b>

### Connected products:



KRLJ...H80 Vertical Elbow - Left	KRLBJ...H80 Vertical Elbow - Left	TRJ...H80 Vertical Tee -Lengthwise	TRSJ...H80 Vertical Tee - Crosswise	TRSBJ...H80 Vertical Tee - Crosswise	RKLJ...H80 Left Reducer	RKLBJ...H80 Left Reducer	RKPJ...H80 Right Reducer
							
RKPBJ...H80 Right Reducer	RKSJ...H80 Straight Reducer	RKSBJ...H80 Straight Reducer	LRJH80 Corner Connector	LRBJH80 Corner Connector	TKDJ...H80 Add-on Tee	LRPJH80 Corner Connector	