

## TRSBJ...H80 Vertical Tee - Crosswise

### Overview:

#### Application

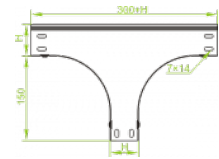
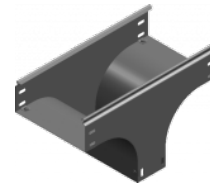
Branching out cable routes. Transition of tray cable run from the horizontal to the vertical plane.

#### Material

Steel, strip-galv. acc. to the Sendzimir method to PN-EN 10346:2011 (SG)

#### Available to order:

**F-** steel, hot-dip galv. to PN-EN ISO 1461:2011 (HDG)  
**E-** stainless steel (SS)  
**L-** powder coating in a full range of colours (PC)



**For installation use Screw Sets SGK M6x12 or SG M6x12 and Straight Connectors LPL or LPP.**  
**Quick and convenient installation by the use of dismantled parts**  
**This innovative solution allows for fast and safe cable laying without the need of pulling**

### Versions:

Sheet thickness: **1,0 mm**

Symbol	Width a [mm]	Catalogue number	Quantity in box	Weight 1 pc.
TRSBJ100H80	100	188710	1	1,16
TRSBJ150H80	150	188715	1	1,35
TRSBJ200H80	200	188720	1	1,53
TRSBJ300H80	300	188730	1	1,90
TRSBJ400H80	400	188740	1	2,27
TRSBJ500H80	500	188750	1	2,64
TRSBJ600H80	600	188760	1	3,00

### Connected products:

KCJ...H80N Cable Tray	KOJ...H80N Cable Tray	NO24x35 Cable Protection Ring	KBJ...H80 Cable Tray	KKJ...H80 90° Horizontal Bend	KKBJ...H80 90° Horizontal Bend	KKPJ...H80 90° Horizontal Bend	KKMJ...H80 45° Horizontal Bend
KKMBJ...H80 45° Horizontal Bend	KKMPJ...H80 45° Horizontal Bend	TKJ...H80 Horizontal Tee	TKBJ...H80 Horizontal Tee	TKPJ...H80 Horizontal Tee	CZKJ...H80 Horizontal Cross-over	CZKBJ...H80 Horizontal Cross-over	CZKJP...H80 Horizontal Cross-over
LJ...H80 90° Vertical Bend	LUBJ...H80 90° Vertical Bend	LUPJ...H80 90° Vertical Bend	LUMJ...H80 45° Vertical Bend	LUMBj...H80 45° Vertical Bend	LUMPJ...H80 45° Vertical Bend	LLJ...H80 Adjustable Vertical Bend	LLBJ...H80 Adjustable Vertical Bend
ELJ...H80 Adjustable Vertical Bend Element	ELBJ...H80 Adjustable Vertical Bend Element	OPZJ...H80 Horizontal Bypass	OPZBJ...H80 Horizontal Bypass	OPNJ...H80 Vertical Bypass	OPNBj...H80 Vertical Bypass	KRPJ...H80 Vertical Elbow - Right	KRPBj...H80 Vertical Elbow - Right


 KRLJ...H80  
 Vertical Elbow -  
 Left

 KRLBJ...H80  
 Vertical Elbow -  
 Left

 TRJ...H80  
 Vertical Tee  
 -Lengthwise

 TRBJ...H80  
 Vertical Tee  
 -Lengthwise

 TRSJ...H80  
 Vertical Tee -  
 Crosswise

 RKLJ...H80 Left  
 Reducer

 RKLBJ...H80 Left  
 Reducer

 RKPJ...H80 Right  
 Reducer

 RKPBJ...H80  
 Right Reducer

 RKSJ...H80  
 Straight  
 Reducer

 RKSBJ...H80  
 Straight  
 Reducer

 LRJH80 Corner  
 Connector

 LRBJH80 Corner  
 Connector

 TKDJ...H80  
 Add-on Tee

 LRPJH80 Corner  
 Connector