

## OPZJ...H100 Horizontal Bypass

### Overview:

**Application**

Bypassing mechanical obstacles in cable routing

**Material**

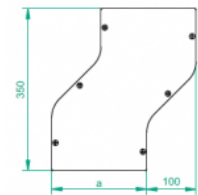
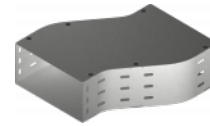
Steel, strip-galv. acc. to the Sendzimir method to PN-EN 10346:2011 (SG)

**Available to order:**

F- steel, hot-dip galv. to PN-EN ISO 1461:2011 (HDG)

E- stainless steel (SS)

L- powder coating in a full range of colours (PC)



**For installation use Screw Sets SGK M6×12 or SG M6×12 and Straight Connectors LPL or LPP. Quick and convenient installation by the use of dismantled parts. This innovative solution allows for fast and safe cable laying without the need of pulling**

### Versions:

Sheet thickness: **1,0 mm**

Symbol	Width a [mm]	Catalogue number	Quantity in box	Weight 1 pc.
OPZJ100H100	100	113710	2	1,08
OPZJ150H100	150	113715	2	1,34
OPZJ200H100	200	113720	2	1,60
OPZJ300H100	300	113730	2	2,14
OPZJ400H100	400	113740	2	2,66
OPZJ500H100	500	113750	2	3,40
OPZJ600H100	600	113760	2	3,74

### Connected products:

KGJ...H100 Cable Tray	KCJ...H100N Cable Tray	KOJ...H100N Cable Tray	NO24x35 Cable Protection Ring	KBJ...H100 Cable Tray	KKJ...H100 90° Horizontal Bend	KKBJ...H100 90° Horizontal Bend	KKPJ...H100 90° Horizontal Bend
KKMJ...H100 45° Horizontal Bend	KKMBJ...H100 45° Horizontal Bend	KKMPJ...H100 45° Horizontal Bend	TKJ...H100 Horizontal Tee	TKBJ...H100 Horizontal Tee	TKPJ...H100 Horizontal Tee	CZKJ...H100 Horizontal Cross-over	CZKBJ...H100 Horizontal Cross-over
CZKJP...H100 Horizontal Cross-over	LJ...H100 90° Vertical Bend	LUBJ...H100 90° Vertical Bend	LUPJ...H100 90° Horizontal Bend	LUMJ...H100 45° Vertical Bend	LUMBJ...H100 45° Vertical Bend	LUMPJ...H100 45° Vertical Bend	LLJ...H100 Adjustable Vertical Bend
LLBJ...H100 Adjustable Vertical Bend	ELJ...H100 Adjustable Vertical Bend Element	ELBJ...H100 Adjustable Vertical Bend Element	OPZBJ...H100 Horizontal Bypass	OPNJ...H100 Vertical Bypass	OPNBJ...H100 Vertical Bypass	KRPJ...H100 Vertical Elbow - Right	KRPBJ...H100 Vertical Elbow - Right
KRLJ...H100 Vertical Elbow - Left	KRLBJ...H100 Vertical Elbow - Left	TRJ...H100 Vertical Tee - Lengthwise	TRBJ...H100 Vertical Tee - Lengthwise	TRSJ...H100 Vertical Tee - Crosswise	TRSBJ...H100 Vertical Tee - Crosswise	RKLJ...H100 Left Reducer	RKLBJ...H100 Left Reducer

RKPJ...H100  
Right ReducerRKPBJ...H100  
Right ReducerRKSJ...H100  
Straight  
ReducerRKSBJ...H100  
Straight  
ReducerLRJH100 Corner  
ConnectorLRBJH100  
Corner  
ConnectorTKDJ...H100  
Add-on TeeLRPJH100  
Corner  
Connector