

## TRSBJ...H30 Vertical Tee - Crosswise

### Overview:

**Application**

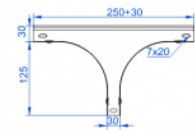
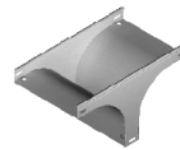
Branching out cable routes. Transition of tray cable run from the horizontal to the vertical plane.

**Material**

Steel, strip-galv. acc. to the Sendzimir method to PN-EN 10346:2011 (SG)

**Available to order:**

- F-** steel, hot-dip galv. to PN-EN ISO 1461:2011 (HDG)
- E-** stainless steel (SS)
- L-** powder coating in a full range of colours (PC)



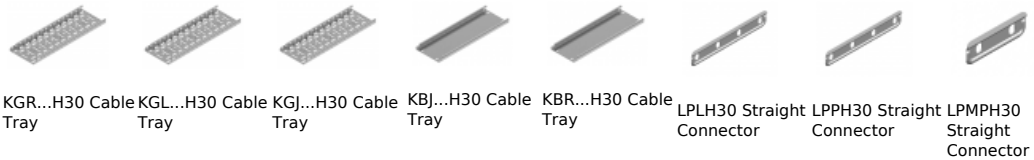
**For installation use Screw Sets SGK M6×10 or SG M6×10 and Straight Connectors LPL or LPP.**  
**Quick and convenient installation by the use of dismantled parts**  
**This innovative solution allows for fast and safe cable laying without the need of pulling**

### Versions:

Sheet thickness: **1,0 mm**

Symbol	Width a [mm]	Catalogue number	Quantity in box	Weight 1 pc.
<b>TRSBJ50H30</b>	<b>50</b>	<b>137305</b>	<b>1</b>	<b>0,52</b>
<b>TRSBJ100H30</b>	<b>100</b>	<b>137310</b>	<b>1</b>	<b>0,68</b>
<b>TRSBJ150H30</b>	<b>150</b>	<b>137315</b>	<b>1</b>	<b>0,86</b>
<b>TRSBJ200H30</b>	<b>200</b>	<b>137320</b>	<b>1</b>	<b>1,06</b>
<b>TRSBJ300H30</b>	<b>300</b>	<b>137330</b>	<b>1</b>	<b>1,43</b>

### Connected products:



KGR...H30 Cable Tray    KGL...H30 Cable Tray    KGJ...H30 Cable Tray    KBJ...H30 Cable Tray    KBR...H30 Cable Tray    LPLH30 Straight Connector    LPPH30 Straight Connector    LPMPH30 Straight Connector



LPMLH30 Straight Connector    SGK... Screw Set    SM... Screw Set