



DECORATIVE

WOODEN POLES

MAINTENANCE GUIDE





MAINTENANCE GUIDE FOR WOODEN POLES

CONTENT



| | |
|--------------------------------------|----|
| VALMONT PROCESS OF STAIN APPLICATION | 2 |
| AGING | 3 |
| MAINTENANCE PROCEDURE | 4 |
| Phases simplified | |
| NDT testing | |
| MAINTENANCE KITS | 5 |
| STANDARD COATING REVISION | 6 |
| REFINISHING THE POLE | 7 |
| VANDALISM CORRECTIONS | |
| Graffiti 01, 02 | 8 |
| Graffiti 03 | 9 |
| Nicks and cuts | |
| Deep cuts or gouges | |
| Stolen doors | |
| Posters and stickers | |
| COLOUR MATCHING | 11 |

Terms of delivery can be downloaded from our website or by request
sales@tehomet.com
www.woodenpoles.com/downloads
www.tehomet.com/en/downloads/terms-of-delivery

Tehomet (a Valmont company) Wooden Poles are engineered to perform to the same standards as steel and aluminium poles. Tehomet grants warranty for structure and components in delivered products. Products are warranted for a period of two (2) years from the date of original delivery date due to manufacturing errors. All the terms of delivery must be complied. Our wooden poles are calculated and sized with the same life time reference of "25 years in compliance with the European Directive of 1985".

VALMONT PROCESS OF STAIN APPLICATION

- The water based system has been chosen by Valmont Inc. because of its efficiency and lower environmental impacts.
- Wood is a natural material and it is expected to expand and shrink as the seasons and moisture change. Our elastic coating is designed to expand and shrink with the wood without cracking.

OUR COATING SYSTEM

- The first layer is a preservative which protects the wood from blue stain fungi, mildew and rot.
- The second layer is then applied to give the wood its final colour.
- To receive optimized thickness of varnish, 2 layers of colour tinted varnish are applied to protect against UV.

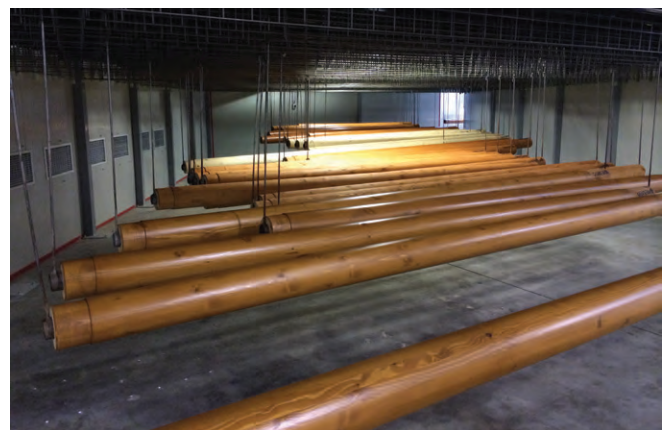
TO ENSURE THE QUALITY OF THE SYSTEM

- A spray gun is used to ensure a consistent coating.
- Drying chamber is applied on each layer to increase the quality of coating system.

A spray gun



Drying chamber

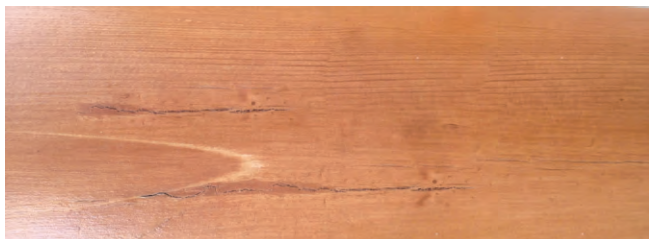


A SCHEDULED MAINTENANCE PROGRAM IS RECOMMENDED TO MAXIMIZE THE LIFE TIME OF YOUR WOODEN POLE

UV radiation and humidity are the main reasons for degradation of the surface finish. These two phenomena change the aesthetic of the pole. With no maintenance, the effectiveness of the coating will decrease progressively and make defects in the wood possible.

AGING

1st stage, the aesthetic effects*



Gradual loss of the glossiness of the finish can be noticed. Micro-cracks may appear.

2nd stage, the aesthetic effects*



Some parts of the pole may begin to lose layers of finish. This may cause some discontinuity in the surface colour. Places without stain may become grey. Cracks may appear.

* Colors in example images are not the same. Images display the gradual loss of color in surface.

FIRST SIGNS OF AGING

The evolution of the aging depends on the level of sunlight and the alternation between humid and dry periods. For that reason the installation location should be taken into account when choosing the initial colour. Shades in the middle of the colour range show fewer sign of aging.

The first stage is running from 2 to 5 years, except on direct sea side, with the sanding effect that damages all the materials, even steel.

MAINTENANCE PROCEDURE

Maintenance can be performed on-site while the pole is in upright position throughout the life time of the pole.

Actions required depend on the signs of aging of the pole after the first inspection.

PHASES SIMPLIFIED

Phase 1: Inspection

Check for signs of wear or damage. If none is found, further actions are not necessary.

Phase 2: Cleaning

Clean the surface from all dust and debris using water and soap if needed.

Phase 3: Sanding and Revarnishing

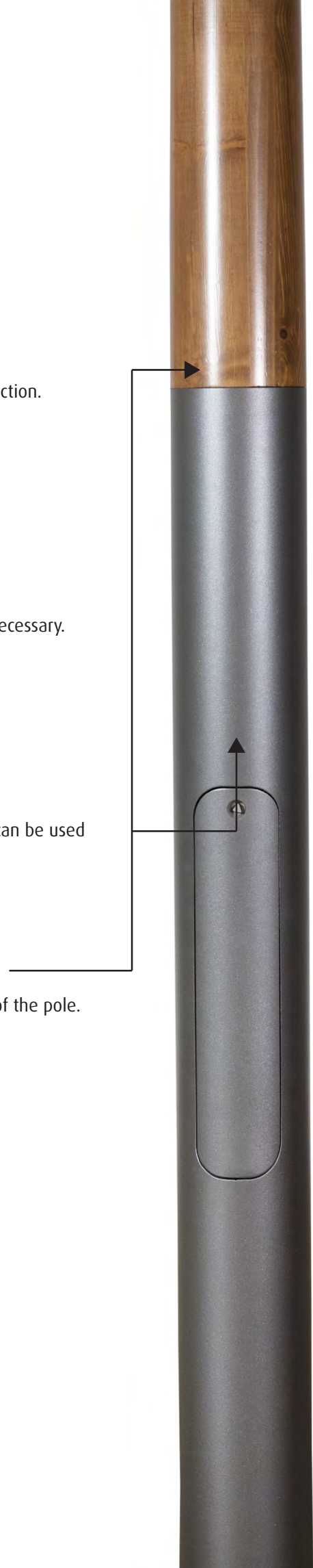
Superficial surface damage can be easily removed with sanding paper. Filler can be used to hide deeper nicks and gouges. Once the effected area is repaired the surface can then be easily revarnished.

NON-DESTRUCTIVE TESTING

Simple test is recommended to investigate the moisture level and condition of the pole.

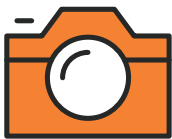
- Push wood section firmly above the steel base section.
- Remove the door and push the wood from the inside the pole.

If the wood feels soft contact Valmont specialist for advise.



MAINTENANCE KITS

Maintenance kits are prepared for different levels of treatment required. Contact should be made with your Valmont representative along with photograph to quantify the issue and assist with selection of the correct maintenance kit.



Maintenance kit HK01

For small area surface treatment

COLORS:

| | |
|----------------------|--------|
| Colored varnish (UV) | 100 ml |
| Color | 10 ml |

TOOLS:

| | |
|---------------|-------|
| Brush | 1 pcs |
| Sponge | 1 pcs |
| Sanding block | 1 pcs |



Maintenance kit HK02

Medium-sized maintenance and repair

COLORS:

| | |
|--|--------|
| Colored varnish (UV) | 500 ml |
| Color | 100 ml |
| Steel repair bottle (RAL-tones 1:1 only, no wet-paints) | 5 ml |

TOOLS:

| | |
|---------------------------|-------|
| Brush | 1 pcs |
| Sponge with wooden handle | 1 pcs |
| Sanding paper | 1 pcs |
| Mixing container | 1 pcs |
| Wooden mixing tool | 1 pcs |

REPAIR:

| | |
|---------------|------------------------|
| Colored putty | 1 pcs (Epoxy resin) |
| Hardener | 1 pcs (Epoxy Hardener) |



Maintenance kit HK03

Full-scale maintenance procedure

COLORS:

| | |
|----------------------|--------|
| Colored varnish (UV) | 9 l |
| Color | 500 ml |

TOOLS:

| | |
|---------------------------|----------------------|
| Brush | 1 pcs |
| Sponge with wooden handle | 1 pcs |
| Sanding paper | 1 pcs (hardness 120) |
| Mixing container | 1 pcs |
| Wooden mixing tool | 1 pcs |

REPAIR:

| | |
|---------------|------------------------|
| Colored putty | 1 pcs (Epoxy resin) |
| Hardener | 1 pcs (Epoxy Hardener) |

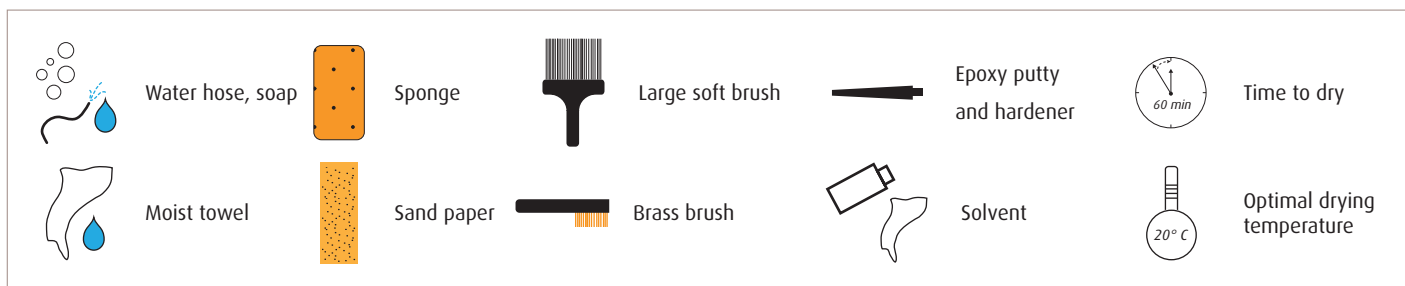


RECOMMENDED MAINTENANCE CONDITIONS

- The outside temperature must be above 18°C before refinishing the pole can be performed.
- The surface temperature of the pole should not be greater than 50°C.
- Humidity should be less than 70%.

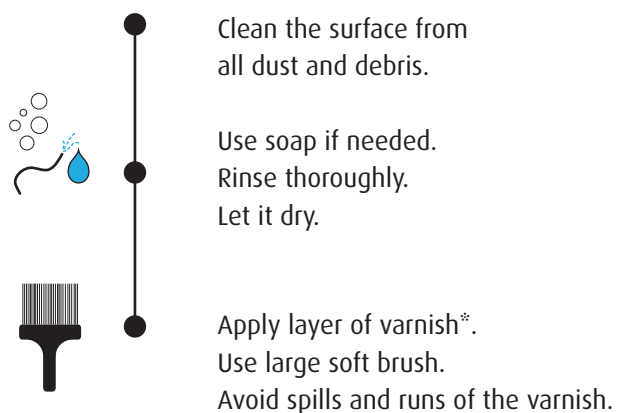
These are the requirements of our system, you must check with other providers for other systems.

SYMBOL LEGEND



STANDARD COATING REVISION

This process should be performed at the first sign of aging. It enables to maintain the aesthetic of the pole by ensuring the finish is thick enough to protect the wood.



NOTE:

Use only water based solution:

*

- Aquatop 2920-04 from TEKNOS
- other equivalent system

Cleaning

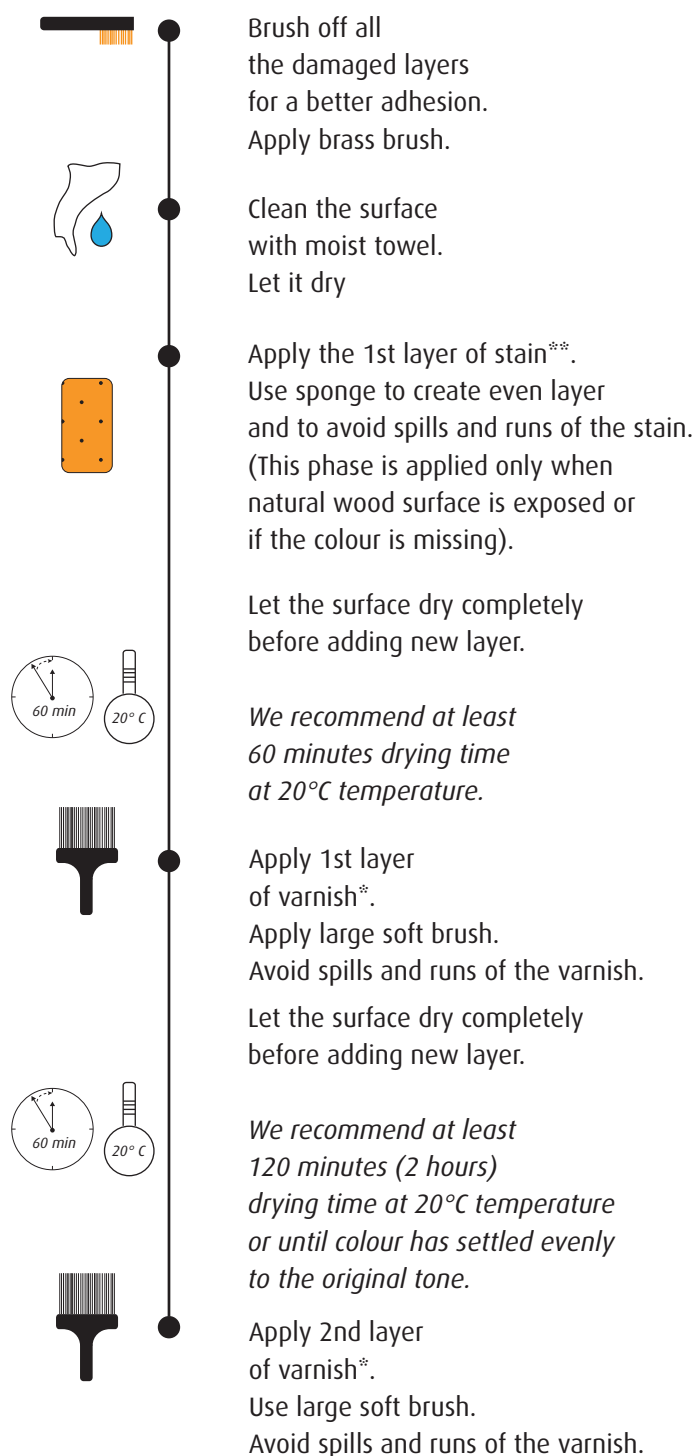


REFINISHING THE POLE

This process is used to refinish the pole when the initial recommended maintenance has not been followed.

At this stage of aging, it may not be possible to fully restore colour and fill in micro cracks, by adding a new specific layers. Correct thickness of the coating can be restored to protect the wood.

The new layers have the same durability as the original coating from the factory. Maintenance procedures can be performed throughout the life time of the pole.



Brushing



NOTE:
Use only water based solution:

*

- Aquatop 2920-04 from TEKNOS
- other equivalent system

**

- Aqua Primer 2900-02 from TEKNOS
- Pinja Wood Stain from TIKKURILA
- other equivalent system.

VANDALISM CORRECTIONS

GRAFFITI

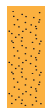
01



Clean the affected area with a solvent.

If necessary the affected area can be touched with coloured varnish*
Avoid spills and runs of the varnish.

02



If the solvent is not effective, graffiti can be removed with sandpaper



If the base colour of the pole remains after the graffiti is removed, reapply the coloured varnish* to complete the repair.
Avoid spills and runs of the varnish.

Sanding



NOTE:

Use only water based solution:

*

- Aquatop 2920-04 from TEKNOS
- other equivalent system

**

- Aqua Primer 2900-02 from TEKNOS
- Pinja Wood Stain from TIKKURILA
- other equivalent system.

VANDALISM CORRECTIONS

GRAFFITI

03

If the base colour is removed it will need to be reapplied:



Brush off all the damaged layers for a better adhesion.
Apply brass brush.

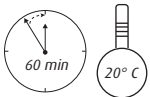


Clean the surface with moist towel.
Let it dry



Apply the 1st layer of stain**.
Use sponge to create even layer and to avoid spills and runs of the stain.
(This phase is applied only when natural wood surface is exposed or if the colour is missing).

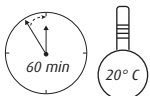
Let the surface dry completely before adding new layer.



We recommend at least 60 minutes drying time at 20°C temperature.



Apply 1st layer of varnish*.
Apply large soft brush.
Avoid spills and runs of the varnish.
Let the surface dry completely before adding new layer.



We recommend at least 120 minutes (2 hours) drying time at 20°C temperature or until colour has settled evenly to the original tone.



Apply 2nd layer of varnish*.
Apply large soft brush.
Avoid spills and runs of the varnish.

Applying varnish



NOTE:

Use only water based solution:

*

- Aquatop 2920-04 from TEKNOS
- other equivalent system

**

- Aqua Primer 2900-02 from TEKNOS
- Pinja Wood Stain from TIKKURILA
- other equivalent system.

VANDALISM CORRECTIONS

NICKS AND CUTS



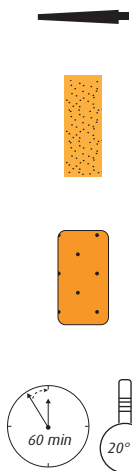
- For small nicks in the surface, a colour layer ** can be applied locally to restore the surface.
- The age of the pole affects on colour contrast and end result.

STOLEN DOORS

- Replacement is possible.
- Communicate the order references concerning the door opening sizes and positioning of the door with a local Valmont Inc. sales office.



DEEP CUTS OR GOUGES



- Mix epoxy putty and hardener (ratio 5:1) and fill the hole.
- After the putty has cured, sand it smooth.
- Once sanded, the base colour ** of the pole can be reapplied, if needed.
- Repeat if needed

See section
REFINISHING THE POLE

POSTERS AND STICKERS



- Try to remove the sticker or poster with warm water or water hose.
- Alcohol can be used to remove any residual glue or adhesive.
- Once dry, if you notice any difference in gloss of the stain, locally apply one layer of translucent coat (see Refinishing of the pole).

NOTE:

Use only water based solution:

※

- Aquatop 2920-04 from TEKNOS
- other equivalent system

※※

- Aqua Primer 2900-02 from TEKNOS
- Pinja Wood Stain from TIKKURILA
- other equivalent system.

Applying epoxy



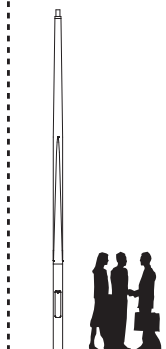
COLOUR MATCHING

To allow a perfect continuity with existing wood poles, it is possible to measure the colour composition of material already installed. Measurement is done with a specific portable device (CIE-LAB colour space).

The results obtained enable our stain supplier to produce a new stain with the matching colour.

POSSIBILITIES TO MEASURE THIS COLOUR COMPOSITION

- From a sample sent to our plant.
- On site, on installed pole / furniture.
Visit by Valmont Inc. trained specialist.



valmont 

Colour measurment



PALLAS

INARI

RUKA

KOLI

IVALO

BALLAD

3-24m

SEKA

ONTELO

LEMPEÄ

LAINÉ

KAISLA

RYTMI

TEMPO



For further information, please contact:

sales@tehomet.com

Tel. +358 15 337 7770

TEHOMET OY

Linjakuja 2

FI-59100 PARIKKALA

FINLAND

www.woodenpoles.com

www.tehomet.com